

Auditory Assistance

schools
houses of worship
government facilities



SoundField

boardrooms
education
outdoor events

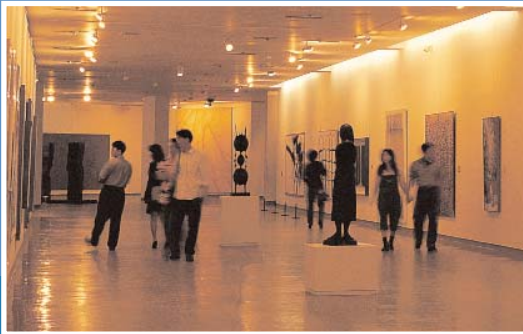
Language Interpretation

houses of worship
corporate meetings
tour groups



Tour Group Communications

training
cruise ships
trade shows



*Supplied by:
A Bridge Between Nations
www.abbn.com
info@abbn.com
888 432 0874*

Don't miss a single sound

Listen[®]

www.ListenTech.com

Product Catalog

September, 2003

Suggested Systems

Listen Systems are designed to give you a starting package to meet your wireless audio needs. But don't forget that adding extra receivers and accessories can add functionality, value, and convenience to your system. Contact Listen or your Authorized Listen Dealer and we will be happy to help create a customized system to meet your needs.



Try Listen System
(LS-01-072 for 72MHz)

A great starter system to comply with Americans with Disabilities Act guidelines. Includes an LT-800 Stationary Transmitter and antenna, three LR-300 Digital Receivers with Single Ear Buds, and an ADA Compliance Signage Kit.

Where to Use the Try Listen System:

- Houses of worship: Auditory assistance, in-ear monitoring
- School: Parent/teacher meetings, auditoriums, classrooms
- Live theaters: Auditory assistance, visual description, ADA compliance



Basic Listen System
(LS-02-072 for 72MHz)

If you are on a tight budget but want to give an auditory assistance option to your guests, the Basic Listen System offers everything you need at an affordable price. The Basic System includes an LT-800 Stationary Transmitter and antenna, four LR-300 Digital Receivers with Single Ear Buds and an ADA Compliance Signage Kit.

Where to Use the Basic Listen System:

- Outdoor events: Auditory assistance, visual description, in-ear cueing
- Corporate Settings: Board meetings, training centers
- Cinemas: Auditory assistance, ADA compliance



Performance System
(LS-03-072 for 72MHz or LS-03-216 for 216MHz)

Our most popular system. The Performance System has everything you need to specify, install and operate a wireless audio package. Included are an LT-800 Stationary Transmitter with Universal Antenna Kit and Rack Mounting Kit, four LR-400 Display Receivers with Ear Speakers and alkaline batteries and an ADA Signage Kit.

Where to Use the Performance System?

- School: Classrooms, multimedia centers
- House of Worship: Auditory assistance
- Stadiums: Audio monitoring, press feeds
- Courtrooms: Auditory assistance, audio/video recording feed



Advanced Installed System
(LS-04-072 for 72MHz or LS-04-216 for 216MHz)

Similar to the Performance System, the Advanced Installed System uses Listen's LR-500 Programmable Display Receivers and adds NiMH recharging equipment. Perfect when you rely on your guests to find their own audio channel, since you program the receivers for only the channels you are using.

Where to Use the Advanced System?

- Outdoor events: Auditory assistance, visual description, in-ear cueing
- Corporate Settings: Board meetings, training centers
- Cinemas: Auditory assistance, ADA compliance
- House of Worship: Auditory assistance, overflow areas



Personal System

(LS-05-072 for 72MHz or LS-05-216 for 216MHz)

Designed with the individual in mind. The Personal System's LT-700 Portable Transmitter, lavalier mic, LR-400 Display Receiver, and Ear Speaker all go in the handy Listen Soft Case to be taken to school, to house of worship, or even the theater. Give the transmitter to the speaker and you won't miss a single sound.

Where to Use the Personal System:

- Houses of Worship: Auditory assistance
- School: Classrooms, multimedia centers
- Courtrooms: Auditory assistance
- Training Centers: Remote monitoring
- Corporate Settings: Language interpretation, auditory assistance



Amplified Soundfield System - Basic

(LS-09-072 for 72MHz or LS-09-216 for 216MHz)

Need a portable sound system? This system gives a great wireless option by combining a Listen LT-700 Portable Transmitter, collar microphone and LR-600 Wireless Speaker / Receiver. Wireless audio anywhere you need it at a moment's notice.

Where to Use the Soundfield System:

- Outdoor events: Auditory assistance, soundfield
- Schools: Classrooms, cafeteria, playground, outdoor activities, assemblies
- Tours: Facilities, zoos, cruise ships
- Houses of Worship: Tour excursions, outdoor activities, language interpretation, small room amplification



7-Person Tour Guide / Language Interpretation System

(LS-06-072 for 72MHz or LS-06-216 for 216MHz)

A great starting point for small facility tours or a venue wishing to provide language interpretation. Includes an LT-700 Portable Transmitter with Over-the-Ear Mic, seven LR-400 Display Receivers with Ear Speakers, alkaline batteries and carrying case.

Where to Use the 7-Person System:

- Facility tours: Auditory assistance, professional tours, language interpretation
- School: Classrooms, board meetings, field trips
- Government: Language interpretation, outdoor tours
- Cruise Ships: On-ship introductory tours, off-ship excursions



15-Person Tour Guide / Language Interpretation System - Advanced

(LS-08-072 for 72MHz or LS-08-216 for 216MHz)

Similar to the 7-Person System, the 15-Person Advanced System substitutes Listen's LR-500 Programmable Display Receivers and adds NiMH recharging equipment. Perfect for facilities with multiple tours or simultaneous language interpretation.

Where to Use the 15-Person System:

- Corporate Settings: International conferences, board meetings, training centers
- Museums: Multiple simultaneous tours
- Factories: Multiple language tours
- Houses of Worship: Auditory assistance, multiple language interpretation

Stationary Transmitter



Antenna not included (see LT-800 Accessories on page 5).

LT-800 Features

1. POWER on/off on front of unit for easy access.
2. Multiple audio inputs, with input level control and dual VU meters (see Features #13 and 14).
3. Mix Level control sets level of mixed audio. VU meter shows the output level of your mixed audio.
4. Contour equalization cuts/boosts frequencies above 6kHz.
5. Multiple transmitter power settings (full, 1/2 and 1/4) with LED indicator (control on back panel).
6. LCD display indicates channel selected as well as electronic lock status.
7. UP/DOWN channel selection of 57 channels. Can also electronically lock on channel to prevent tampering.
8. Earphone jack and volume control to check audio integrity of transmission source.
9. Test tone to aid in tuning.
10. Top mount, rear mount, and remote antenna options (see LT-800 Accessories on page 5).
11. In-line power supply (LA-201 Power Supply included) attaches here.
12. Audio output jack contains mix of audio inputs for distribution to another audio device.
13. Unbalanced / phono audio input. Select either speaker or line level input (switch on back panel).
14. Balanced / female XLR / 1/4 inch audio input. Select either Mic or Line level for input (switch on back panel).
15. When enabled, SQ™ technology provides highest audio quality available in its product category (see page 8). SQ can be disabled for compatibility with other assistive listening equipment.

Use for stationary installations such as houses of worship, meeting rooms, theaters, stadiums or arenas for ADA compliance.

LT-800 Benefits

- **Superior Audio Quality** – 80dB signal-to-noise ratio ... setting the industry's sound quality standard.
- **Designed for installation** – Rack mountable with remote antennas make installation easy and service reliable.
- **Every Application** – A choice of 72 or 216MHz systems, complete antenna and accessory options, and superb audio quality make Listen products ideal for an extensive range of applications.
- **Great Range** – Up to 3,000 feet (914 meters).
- **Works Where Others Won't** – Incorporates the latest, most advanced technology for clear transmission.

Specify: **LT-800-072** for 72MHz
or **LT-800-216** for 216MHz

LT-800 Specifications

RF Frequency Range:

72MHz: 72.025 - 75.950 MHz
216MHz: 216.025 - 216.975 MHz

Channels: 57

Frequency Accuracy: +/- .005% stability
0C to 50C (32 F to 122 F)

Transmitter Stability: 50 PPM

Transmitter Range: 3,000 ft (914.4m)

Output Power:

72MHz: 8000uV at 3m (20mW)
216MHz: 100mW

Antenna : See below

Antenna Connector:

72MHz: Reverse BNC
216MHz: BNC

System Frequency Response**:

72MHz: 50Hz - 15kHz (+/- 3dB)
216MHz: 63Hz - 10kHz (+/- 3dB)

System Signal-to-Noise Ratio**:

SQ enabled: 80dB; SQ disabled 60dB

System Distortion:** <2% total harmonic distortion (THD) at 80% deviation

Audio Input 1:

Rear panel. Female-XLR and 1/4 inch combo connector, balanced, 0/-55dBu (mic/line) nominal input level adjustable, -30/+21dBu (mic/line) maximum, impedance 1k/20k Ohms (line/mic)

Audio Input 2: Rear panel. One phono connector, unbalanced, -10/+10dBu (line/speaker) nominal input level adjustable, +30dBu maximum, impedance 100k Ohms

Combined Audio Output (Mix): Rear panel. One phono connector, unbalanced, 0dBu nominal output level, +19dBu maximum, impedance 10 Ohms

Stereo Headphone Output: Front panel. 3.5mm connector, unbalanced, adjustable output level, +14dBu, 250mW, maximum, impedance 32 Ohms

RF Power Selection: Rear panel. Full, 1/2, 1/4 (see "Output Power" above).

Set-up Controls (Front Panel): Input Level, Mix Level (modulation), Contour Equalization

User Controls: RF Power, Test Tone, channel UP and DOWN, Input 1: Line or Mic level, Input 2: Speaker or Line level)

Programming: Channel selection can be locked by holding the UP and DOWN button 5 seconds

Input VU Meter: Dual ten step LED (eight green, two red)

Mix VU Meter: Ten step LED (eight green, two red)

RF Power Indicator: Four step green LED

Power Indicator: Green LED illuminates when the unit is on

LCD Display: Channel and lock status
Test Tone: Red LED illuminates when test tone enabled

Power Supply Input: (LA-201 included) 120VAC, 60 Hz, 19 Watts (maximum continuous). UL Listed

Power Supply Output: 15VAC, 1A

Dimensions: 8.0 in x 8.0 in x 1.75 in
WxDxH (20.3cm x 20.3cm x 4.45cm)

Unit Weight: 3.0 lbs (1.4kg)

Unit Weight with LA-201 Power Supply: 4.4 lbs (2.0kg)

Shipping Weight: 5.0 lbs (2.3kg)

Rack Mounting: 1/2 rack unit (RU)

Temperature (Operation): -10C to 40C
(14 F to 104 F)

** All system specifications are wireless end-to-end

LT-800 Accessories



LA-122 Universal Antenna Kit

The single solution for all of your indoor remote antenna needs. Includes: 72 and 216MHz components; flexible and rigid dipoles and monopole radials; hardware for multiple mounting configurations; and 25 feet (7.6 m) of RG58 coax cable.

Other Stationary Unit Antennas



Telescoping
(Top Mount)

LA-106 for 72MHz or
LA-102 for 216MHz



72MHz Helical
(Top Mount)

LA-101 for 72MHz



90 Degree Helical
(Rear Mount)

LA-123 for 72MHz or
LA-124 for 216MHz



216MHz Ground Plane
(Remote Mount, outdoor)

LA-107 for 216MHz

LT-800 Rack Mount Options



LA-326 Rack Mounting Kit*

Includes components for single and dual rack configuration and a security cover



Antenna Kit for the LA-326 Rack Mount Kit

LA-125 for 72MHz and
LA-126 for 216MHz

* Rack mounted units can only use rear mounted or remote antennas

Portable Transmitter



Use for portable applications such as tour groups, language interpretation, in school classrooms or corporate boardrooms.

Microphone and batteries not included. Requires two AA batteries and condenser microphone (see LT-700 Accessories on page 7 and Portable Accessories on page 11).

LT-700 Features

1. A microphone or line level source (such as a CD or MP3 player) connects here. Use the LA-263 Line/Microphone “Y” Cable to connect an audio device with your microphone (see LT-700 Accessories page 7).
2. Multifunction LED indicates when microphone is muted, if batteries are low, and charging status.
3. Easy access mute switch.
4. Look&Listen™ LCD Display shows channel selection, channel lock, and battery level (see back cover). Also used to program channel selection (see Feature #5).
5. Offers 57 channels, or can be programmed so that only the channels you are using are displayed.
6. UP/DOWN channel selection. Also used to lock and unlock channel selection to prevent accidental channel switching.
7. Easy access POWER button.
8. Manually lockable battery compartment door.
9. Transmitter antenna is built into the microphone cord, eliminating additional wires while maximizing transmission effectiveness.
10. Uses two AA batteries. Adjustable to use either alkaline or NiMH batteries (see SmartCharge™ in LT-700 Benefits below).
11. Exclusive belt clip “loop” prevents unit from slipping off belt or strap.
12. Optional single transformer charging plug port or contact points for Listen’s drop in charging cases (see Accessories page 13).
13. Adjustable microphone sensitivity switch for best audio results.
14. When enabled, SQ technology provides highest audio quality available in its product category. SQ can be disabled for compatibility with other assistive listening equipment (see page 8).



LT-700 Benefits

- **Truly Wireless** – Roam up to 150 feet (46 meters) from the receivers with complete freedom.
- **Superior Audio Quality** – 80dB signal to noise ratio ... setting the industry’s sound quality standard.
- **Compatibility** – Compatible with most assistive listening equipment.
- **SmartCharge** – Charging circuitry built into the unit to prevent overcharging, as well as to insure most complete charge.

Specify: **LT-700-072** for 72MHz
or **LT-700-216** for 216MHz

LT-700 Specifications

RF Frequency Range:

72MHz: 72.025 - 75.950 MHz
216MHz: 216.025 - 216.975 MHz

Channels: 57

Frequency Accuracy: +/- .005% stability
0C to 50C (32 F to 122F)

Transmitter Stability: 50 PPM

Transmitter Range: 150 ft (45.7m)

Output Power:

72MHz: 8000uV at 3m (20mW)
216MHz: 100mW

System Frequency Response:**

72MHz: 50Hz - 15kHz (+/- 3dB)
216MHz: 63Hz - 10kHz (+/- 3dB)

System Signal-to-Noise Ratio:**

SQ enabled: 80dB; SQ disabled 60dB

System Distortion:** <2% THD at
80% deviation

Microphone Input: Unbalanced, tip of
3.5mm connector, [55 dBu nominal,
-32dBu maximum, impedance
21 Ohms]

Microphone Sensitivity: Three position
switch: high, middle and low; 6dB
increments

Line Input: Unbalanced, ring of 3.5mm
connector, [-10dB nominal input level,
+4dBu maximum, impedance
10k Ohms]

Phantom Power: 3VDC

Set-up Controls (behind door): Mic
Sensitivity, NiMH/Alkaline Battery, SQ
Enable/Disable

User Controls: Power, Mute, Channel
UP and DOWN

Programming: Unit can be programmed
so that only desired channels are
displayed to the user; channel selection
can be locked by holding the DOWN
button 5 seconds

LED: Red, illuminates when unit is on.
Flashes when batteries are low, or to
indicate charging. Flashes 2x when
muted

LCD Display: Channel, lock status,
programming

Battery Type: Two AA batteries, alkaline
or NiMH

Battery Life (Listen batteries): 20 hours
alkaline (LA-361), 10 hours NiMH
rechargeable (LA-362)

Battery Charging (NiMH only): Fully
automatic, 14 hours

Optional Power Supply/Charging:

2.3mm OD by 0.7mm ID, barrel type
connector. 7.5VDC, center positive
250mA. Drop in contact points for use
with Listen Charging/Carrying Cases

Dimensions: 3.0 in x 1.0 in x 5.0 in
WxDxH (7.6cm x 2.5cm x 13.cm)

Unit Weight: 3.9oz (111g)

Unit Weight with batteries: 5.8 oz
(164.4g)

Shipping Weight: 1.0 lb (4.5kg)

Door: Manually lockable. UP, DOWN,
and POWER through door, other
controls behind door (see Controls
above)

Temperature - Operation: -10C to 40C
(14 F to 104 F)

** All system specifications are wireless end-to-end

LT-700 Accessories

LT-700 Microphones



Lavalier
LA-261



Over-the-Ear
LA-268



Conference
LA-277



Over-the-Head
LA-262



Collar
LA-276



Noise Canceling
LA-270



Hand Held
LA-274

Use Both an Audio
Source and Mic



**Line/Microphone
"Y" Cable**
LA-263

Microphones with Active Earphones



**Over-the-Head
Mic with Earphone**
LA-272



**Over-the-Ear Mic
with Earphone**
LA-273



These headsets combine cabling for both a
transmitter and a receiver

See page 13 for charging/carrying cases and other portable
product accessories, or www.ListenTech.com

Portable Receivers



LR-500 shown. Earphone and batteries not included. Requires two AA batteries and earphone (see Portable Receiver Accessories on page 10 and 11).

Features of all Listen Portable Receivers

1. Exceptional audio quality – 80dB signal to noise ratio.
2. Line level earphone jack (3.5mm) accepts either mono or stereo headsets.
3. Receiver antenna is built into the earphone cord, eliminating additional wires while maximizing receiver effectiveness.
4. Easy on/off volume control.
5. Manually lockable battery compartment door.
6. Charging plug port or contact points for Listen's drop in charging cases (see Feature #9 below. Also see Accessories on page 11).
7. Channel SEEK for easy tuning.
8. When enabled, SQ provides highest audio quality available in its product category. SQ can be disabled for compatibility with other assistive listening equipment (see below).
9. Uses two AA batteries. Selectable to use either alkaline or Listen's advanced NiMH Rechargeable AA Batteries. SmartCharge incorporated into receiver makes sure each unit receives the most beneficial charge.
10. Exclusive belt clip "loop" prevents unit from slipping off belt or strap.

see page 10 for receiver specifications

LR-300 Digital Receiver



Specify: LR-300-072 for 72MHz

LR-300 Features

All the features mentioned previously, plus:

11. Available in 72MHz with 17 wide band channels.
12. Multifunction LED indicates power on, if batteries are low, and charging status.
13. Digitally tuned with SEEK button behind manually lockable door.
14. Electronically lock on channel by holding the SEEK button down 5 seconds to prevent tampering.



Why Choose the LR-300?

- Cost effective solution for meeting ADA guidelines.
- **Superior Audio Quality** – Same high quality audio as other Listen receivers.
- **Ideal for Single Channel Systems** – When users do not need to (or you don't want them to) change channels.
- **Compatibility** – Utilizes same 72MHz channels as most other assistive listening systems (ALS).

What is SQ?

SQ™ is a combination of audio technologies that provides the highest signal-to-noise ratio available in its product category. This means you hear great sounding audio ... not signal noise.

LR-400 Display Receiver

Specify: LR-400-072 for 72MHz
or LR-400-216 for 216MHz



LR-400 Features

All the features of the LR-300 mentioned previously, plus:

15. Available in 72MHz and 216MHz with 57 channels.
16. Look&Listen LCD Display shows channel selection, channel lock and battery level (see back cover).
17. UP, DOWN, and SEEK buttons behind manually lockable door.
18. Adjustable squelch for signal capture control.

Why Choose the LR-400?

- **LCD makes maintenance easy** – No need to guess about the status of your batteries or which channel you are on (see back panel).
- **Flexibility** – Available in 72 or 216MHz (see page 13).
- **57 Channels** – Compatible with most other assistive listening (ALS) products.
- **Ideal when the receiver channel is not changed regularly** – Channels can be changed easily, but controls are behind the door to limit tampering.

see page 11 for battery options

LR-500 Programmable Display Receiver

Specify: LR-500-072 for 72MHz
or LR-500-216 for 216MHz



LR-500 Features

All the features of the LR-300 and LR-400 mentioned previously, plus:

19. Programmable so guests only need to scan through channels you are using.
20. UP, DOWN, and SEEK buttons are available through the door for easy access.

Why Choose the LR-500?

- **User Friendly** – Users select from only the channels you are using.
- **Ideal when the receiver channel is changed by your end user:**
 - Multiple simultaneous interpretation.
 - Multiple tour groups in the same facility.
 - Tours with multiple languages.
 - When units are shared between multiple rooms, such as convention halls or classrooms.
 - Personal units that change as you go from class, to the movies, to the theater ... and beyond.

see page 11 for charging/carrying cases

Portable Receivers

Portable Receiver Specifications

RF Frequency Range:

72MHz: 72.05 - 75.95MHz.

216MHz: 216.025 - 216.975 MHz*

Number of Channels: 57 (LR-400 & LR-500) or 17 (LR-300)

Sensitivity: .6uV typical, 1 uV maximum for 12dB SINAD

Frequency Accuracy: +/- .005% stability 0C to 50C (32 F to 122 F)

Squelch: Automatic on loss of RF signal. Programmable in 20 steps (LR-400 & LR-500)

System Frequency Response**:

72MHz: 50Hz - 15kHz (+/- 3dB)

216MHz: 63Hz - 10kHz (+/- 3dB)*

System Signal-to-Noise Ratio**:

SQ enabled: 80dB; SQ disabled 60dB

System Distortion:** <2% THD at 80% deviation

Output: 3.5mm connector, 0dBu nominal output level, 16mW maximum, impedance 32 Ohms

Set Up Controls: Programmable channel selection (on LR-500), and Squelch (on LR-400 & LR-500), Alkaline/NiMH Batteries, SQ Enable/Disable

User Controls: Volume, channel UP/DOWN, SEEK (LR-300 includes SEEK only). All controls except volume are electronically lockable

Programming: Unit can be programmed so that only desired channels are displayed (LR-500 only). Squelch can be adjusted for sensitivity and signal capture control (LR-400 & LR-500 only).

Channel selection can be locked by holding the SEEK button 5 seconds

LCD Display: Indicates channel, RF signal strength, lock status, channel programming (LR-500) and squelch programming (LR-400 & LR-500)

LED : Red, illuminates when unit is on. Flashes when batteries are low. Flashes if attempt to change channel when locked. Flashes 2x when charging

Battery Type: Two AA batteries, alkaline or NiMH

Battery Life: 30 hours alkaline (LA-361), 15 hours NiMH rechargeable (LA-362)

Battery Charging (NiMH only): Fully automatic, 14 hours

Optional Power Supply/Charging: 2.3mm OD by 0.7mm ID, barrel type connector. 7.5VDC, center positive 250mA. Drop in contact points for use with Listen Charging/Carrying Cases

Dimensions: 3.0 in x 1.0 in x 5.0 in WxDxH (7.6cm x 2.5cm x 13cm)

Unit Weight: 3.9oz (111g)

Unit Weight with batteries: 5.8 oz (164.4g)

Shipping Weight (individual unit without batteries or earphones): 1lb (453.6kg)

Temperature (Operation): -10C to 40C (14 F to 104 F)

* LR-400 & LR-500 only

** All system specifications are wireless end-to-end

Portable Receiver Accessories

Earphones



Ear Speaker

LA-164



Single Ear Bud

LA-161



Dual Ear Bud

LA-162



Stereo Headset

LA-165



Neckloop

LA-166

Connector Options



Consumer Camcorder Cable

LA-265



Professional Camcorder Cable

LA-266



Sacrificial Cable

LA-275

See
www.ListenTech.com
for Listen's complete line of
accessories and
specifications.

LISTEN WARRANTY-- Listen Technologies Corporation (Listen) warrants its transmitters and receivers (LT-800, LT-700, LR-600, LR-500, LR-400, LR-300 and LR-100) to be free from defects in workmanship and material under normal use and conditions for the useful lifetime of the product from date of purchase. All other products and accessories are warranted for ninety days from date of purchase. This warranty is only available to the original end purchaser of the product and cannot be transferred. Warranty is only valid if warranty card has been returned within 90 days of purchase. This warranty is void if damage occurred because of misuse or if the product has been repaired or modified by anyone other than a factory authorized service technician. Warranty does not cover normal wear and tear on the product or any other physical damage unless the damage was the result of a manufacturing defect. Listen is not liable for consequential damages due to any failure of equipment to perform as intended. Listen shall bear no responsibility or obligation with respect to the manner of use of any equipment sold by it. Listen specifically disclaims and negates any warranty of merchantability or fitness of use of such equipment including, without limitation, any warranty that the use of such equipment for any purpose will comply with applicable laws and regulations. Listen will only accept returned products with prepaid shipping and with a return authorization number. To receive a return authorization number call 1.800.330.0891 or +1.801.233.8992. **Please see www.ListenTech.com or contact Listen for warranty details.**

Charging/Carrying Accessories

For use with portable products LT-700, LR-300, LR-400 and LR-500

Batteries



High Capacity AA Alkaline Batteries*
LA-361



NiMH Rechargeable AA Batteries*
LA-362

* also for use in the LR-600

Power Supplies/Charging Units



Power/Charging Supply
LA-202



12VDC Vehicle Supply
LA-305

Charging/Carrying Cases



16-Unit Drop In Charging/Carrying Case
LA-311



8-Unit Drop In Charging/Carrying Case
LA-321



4-Unit Charging/Carrying Case
LA-317

Also available:

16-Unit Drop In Charging/Carrying Case with Removable Lid	LA-325
16-Unit Carrying Case	LA-313
8-Unit Drop In Charging/Carrying Case with Removable Lid	LA-324
8-Unit Carrying Case	LA-322
4-Unit Charging/Carrying Case with Removable Lid	LA-323
4-Unit Carrying Case	LA-318



Configurable Carrying Case
LA-320



Listen Soft Case
LA-306



Protective Pouch
LA-319

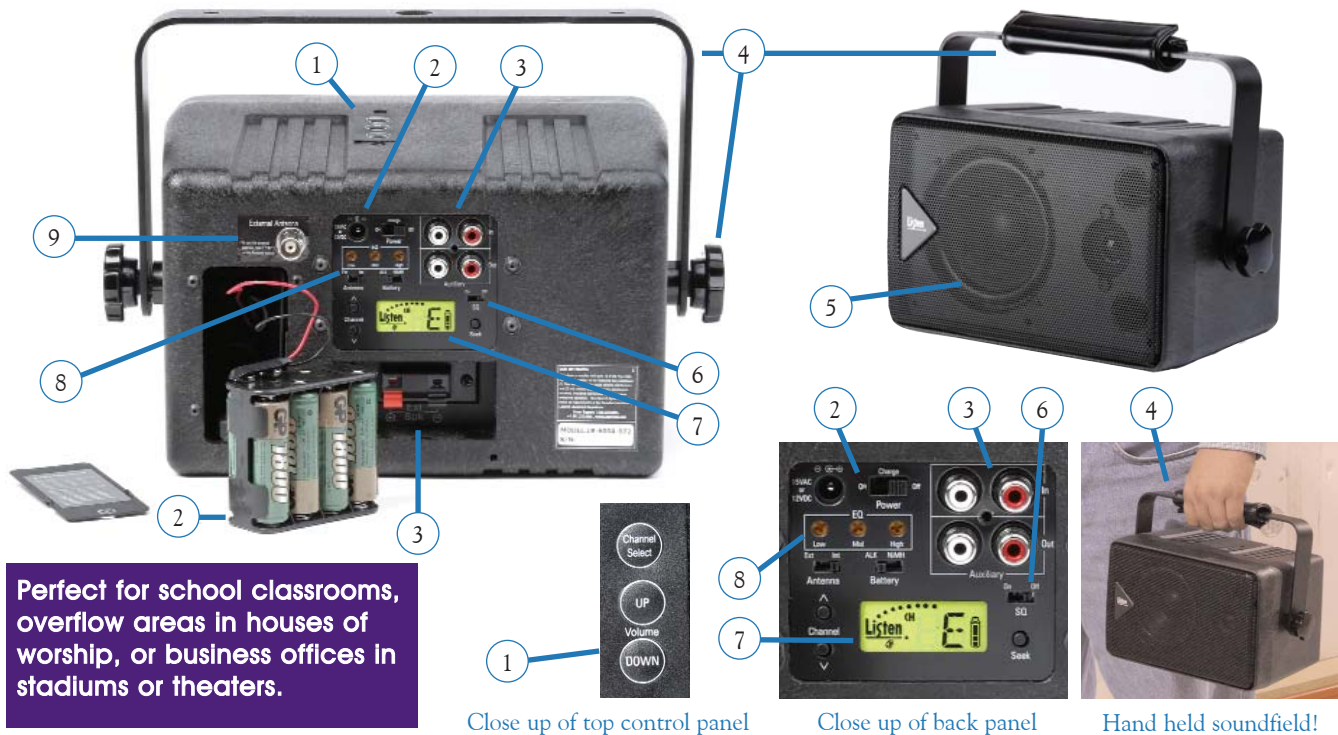


ADA Compliance Kit
LA-304

Products shown sold separately.

Wireless Speaker / Receiver

New!!



Close up of top control panel

Close up of back panel

Hand held soundfield!

LR-600 Features

1. Top mounted channel selection and volume controls for easy access.
2. Operates on 15VAC power supply (LA-201, included), 12VDC, or internal eight AA battery pack (batteries sold separately). Includes SmartCharge for Listen NiMH Rechargeable AA Batteries (LA-362).
3. Unbalanced auxiliary phono input and output ports (see Feature #5).
4. Adjustable handle/mounting bracket. Includes leatherette wrap for hand held use. Leatherette wrap may be removed to mount unit on a wall or ceiling (screws and hollow wall anchors included) or on a microphone stand (16mm nut included). Handle angle can be adjusted.
5. 15/10 Watt (peak/RMS) continuous power with 4 Ohm load, 2-way speaker. Can also drive a separate LA-316 Expansion Speaker.
6. When enabled, SQ technology provides highest audio quality available in its product category. SQ can be disabled for compatibility with other assistive listening equipment (see page 8).
7. Backlit Look&Listen LCD Display indicates channel selected as well as electronic lock status. UP, DOWN, and SEEK buttons tune to 57 channels. Unit can be programmed to show only the channels in use (see back cover).
8. Adjustable three-band equalizer.
9. Internal antenna. For longer range applications, add a Listen 90 Degree Helical or other Listen remote antenna (not supplied, see LR-600 Accessories, page 13).

LR-600 Benefits

- **Truly Wireless!** Battery operation eliminates all cables so you can take it anywhere.
- **Built in 15 Watt Peak Power Amplifier.**
- **Superior Audio Quality** – 80dB signal-to-noise ratio ... setting the industry's sound quality standard.
- **Every Application** – A choice of 72 or 216MHz systems, superb audio quality, and no wires make the LR-600 ideal for an extensive range of applications.
- **Lifetime Limited Warranty** – See www.ListenTech.com for details.
- **SmartCharge** – Charging circuitry built into the unit to prevent overcharging, as well as to insure most complete charge.
- **Versatile** – Great for temporary soundfields, walking tours, sharing between classrooms, rental pools, convention centers ... a host of applications where you either don't want to or can't run wiring.

Specify: LR-600-072 for 72MHz
or LR-600-216 for 216MHz

LR-600 Specifications

RF Frequency Range:

72MHz: 72.025 - 75.950 MHz

216MHz: 216.025 - 216.975 MHz

Channels: 57

Sensitivity: .6uV typical, 1 uV maximum for 12dB SINAD

Frequency Accuracy: +/- .005% stability 0C to 50C (32 F to 122F)

Squelch: Programmable in 20 steps

System Frequency Response**:

72MHz: 50Hz - 15kHz (+/- 3dB)

216MHz: 63Hz - 10kHz (+/- 3dB)

System Signal-to-Noise Ratio**:

SQ enabled: 80dB; SQ disabled 60dB

System Distortion:** <2% THD at 80% deviation

Equalizer: Three band, continuously adjustable via rear panel trim pots.

Unbalanced Auxiliary Input: Two phono connectors, unbalanced, -10dBu nominal input level adjustable, +11dBu maximum, impedance 100k Ohms

Unbalanced Output: Two phono connectors, unbalanced, 0dBu nominal output level, +11dBu maximum, impedance 1k ohms

Internal/External Speaker Output:

15/10 Watts (peak/RMS) continuous power with 4 Ohm load

Set-up Controls, Back Panel:

Internal/External Antenna, Alkaline/NiMH Batteries, SQ Enabled/Disabled

User Controls, (Top Panel): Volume UP/DOWN, Channel UP (lockable)

User Controls (Back Panel):

Power/Charging, channel UP/DOWN, SEEK (channel, SEEK and volume are lockable)

Programming: Unit can be programmed so that only desired channels are displayed. Squelch can be adjusted for sensitivity and signal capture control. Channel and volume can be locked

LCD Display: Backlit, indicates channel, RF signal strength, lock status, programming

Power Supply Input: (LA-201 included) 120VAC, 60 Hz, 19 Watts (maximum continuous). UL Listed

Power Supply Output: 15VAC, 1A

Optional Battery: Eight AA batteries, alkaline or NiMH

Optional Battery Charging: Fully automatic, 14 hours

Battery Life (Listen batteries): 12+ hours* alkaline (LA-361), 8+ hours* NiMH rechargeable (LA-362) (* mid volume, music programming)

Dimensions: 8.0 in x 8.0 in x 1.75 in WxDxH (20.3cm x 20.3cm x 4.45cm)

Dimensions (with bracket/handle in up position): 10.75 in x 6.5 in x 8.0 in WxDxH (27.3cm x 16.5cm x 20.3cm). Handle stands off unit about 2 in (5.1cm)

Unit Weight with LA-201 Power Supply: 7.6 lbs (3.5kg)

Unit Weight with eight AA batteries: 6.8 lbs (3.1kg)

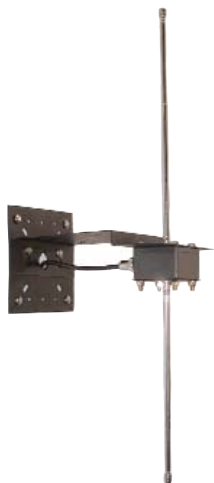
Shipping Weight (individual unit without batteries): 10 lbs (2.8kg)

Temperature (Operation): -10C to 40C (14 F to 104 F)

** All system specifications are wireless end-to-end

LR-600 Accessories

LR-600 Antennas



LA-122 Universal Antenna Kit

The single solution for all of your indoor remote antenna needs. Includes: 72 and 216MHz components; flexible and rigid dipoles and monopole radials; hardware for multiple mounting configurations; and 25 feet (7.6 m) of RG58 coax cable.



90 Degree Helical

(Rear Mount)

LA-123 for 72MHz or
LA-124 for 216MHz)



216MHz Ground Plane

(Remote Mount)

LA-107 for 216MHz)

Expansion Speaker



LA-316 Expansion Speaker

10 watt, 2 channel speaker

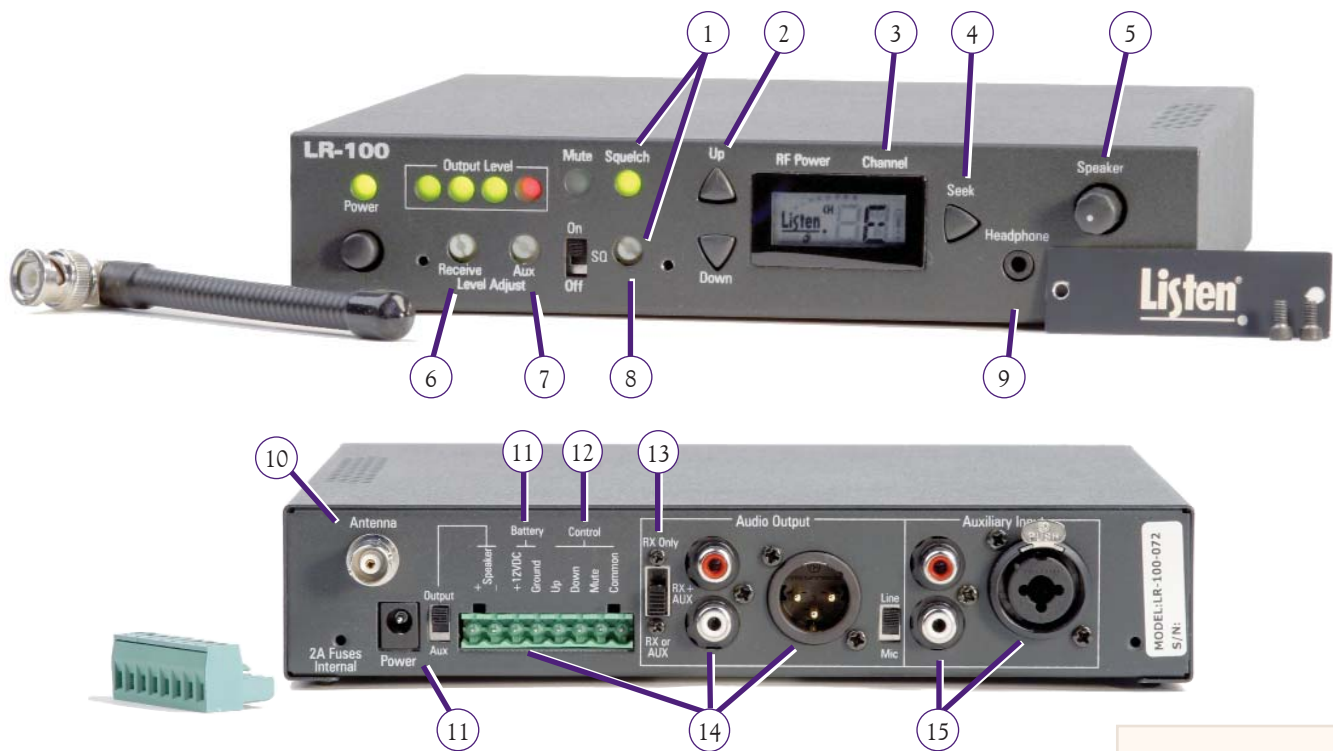
72 or 216MHz ??

Which frequency is right for you? Here are some simple guidelines:

- 72MHz:**
- Compatibility with other assistive listening products.
 - More simultaneous channels (up to six).
- 216MHz:**
- Longer range (up to 3,000 feet or 900 meters).
 - Avoiding interference problems at 72MHz.

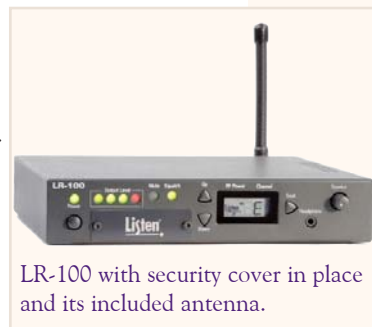
Contact Listen for the best option for your application.

Stationary Receiver / Power Amplifier



LR-100 Features*

1. Adjustable Squelch and LED indicator for signal capture control (Squelch trim pot behind security cover).
2. UP/DOWN channel selection of 57 channels.
3. Look&Listen LCD Display shows channel selection and channel lock status. Also used to program channel selection (see Feature #2) so that only the channels you are using are displayed (see back cover).
4. SEEK button to easily find the transmission. The LR-100 can also electronically lock on channel to prevent accidental channel switching.
5. Adjustable volume control for speaker output.
6. Receiver volume trim pot control behind security cover.
7. Auxiliary audio input volume trim pot control behind security cover.
8. When enabled, SQ technology provides highest audio quality available in its product category. SQ can be disabled for compatibility with other assistive listening equipment (see page 8).
9. Earphone jack to check audio signal integrity.
10. Use 90 Degree Helical Antenna (included) or substitute remote antenna (see LR-100 Accessories) for longer range applications.
11. Operates on either supplied 16VAC/1000mA power input (LA-201), or optional 12VDC battery. Trickle charge circuitry for 12VDC battery.
12. External switch controller can connect to terminal block to change channels and/or mute audio.
13. Selectable audio output. Select ALS received audio, received and auxiliary audio input, or "receiver or auxiliary" where auxiliary plays until an ALS signal is received, which overrides the auxiliary input.
14. Three different output options: Unbalanced/phono, balanced/Male XLR, or speaker wire.
15. Three different input options: ALS receiver (72 or 216MHz, depending on model), unbalanced/phono connector, or balanced/Female-XLR 1/4 inch combo connector.



LR-100 with security cover in place and its included antenna.

Use the LR-100 to extend a soundfield wirelessly in your house of worship, theater, school, or outdoor application.

LR-100 Benefits*

- Superior Audio Quality – 80dB signal to noise ratio ... setting the industry's sound quality standard.
- Built in 15 Watt Peak Power Amplifier – Use with received ALS system or independently with auxiliary input/output ports.
- Adds value to ALS system – Set up remote sound station or use to integrate multiple media sources.

Specify: LR-100-072 for 72MHz
or LR-100-216 for 216MHz

LR-100 Specifications

RF Frequency Range:

72MHz: 72.025 - 75.950 MHz

216MHz: 216.025 - 216.975 MHz

Channels: 57

Sensitivity: .6uV typical, 1 uV maximum for 12dB SINAD

Frequency Accuracy: +/- .005% stability 0C to 50C (32 F to 122 F)

Antenna: (Flexible helical included)

72MHz: 9.0 in (23cm)

216MHz: 5.5 in (14cm)

Squelch: Continuously adjustable via front panel trim pot

System Frequency Response**:

72MHz: 50Hz - 15kHz (+/- 3dB)

216MHz: 63Hz - 10kHz (+/- 3dB)

System Signal-to-Noise Ratio**:

SQ enabled: 80dB; SQ disabled 60dB

System Distortion:** <2% THD at 80% deviation

Auxiliary Input to Output Frequency Response: 25Hz to 20kHz (+/-3dB), SNR: >80dB, Distortion: <0.2%

Balanced Auxiliary Input: Female XLR-1/4 inch combo connector, balanced, 0dBu nominal input level adjustable, +13dBu maximum, impedance 600 Ohms

Unbalanced Auxiliary Input: Two phono connectors, unbalanced, -10dBu nominal input level adjustable, +7dBu maximum, impedance 10k Ohms

Balanced Output: Male XLR, balanced, 0dBu nominal output level, +16dBu maximum, impedance 2k/10 Ohms (line/mic)

Unbalanced Output: Two phono connectors, unbalanced, -10dBu nominal output level, +2dBu maximum, impedance 2k Ohms

Stereo Headphone Output: Front panel. 3.5mm connector, unbalanced, adjustable output level, +16dBu, 120mW, maximum, impedance 32 Ohms

Speaker Output: Detachable terminal block, bridged, adjustable output level, 15/10 Watts (peak/RMS) continuous power with 4 Ohm load

User Controls: Volume, channel UP/DOWN, SEEK (all controls except volume are lockable)

Set-up Controls: Front: Receive Level, Auxiliary Input Level, SQ On/Off, Squelch. Back: Audio Output Select (RX Only, RX + AUX, RX or AUX, Speaker (Output, Aux), Switchable balanced output level

Remote Controls: Eight position detachable terminal block, channel up, channel down, mute

Programming: Unit can be programmed so that only desired channels are displayed to the user, channel selection can be locked by holding the SEEK button 5 seconds

VU Meter LED: Three green, one red

LED Indicators: Power (green), Squelch (green), Mute (green)

LCD Display: Channel, RF signal strength, lock status, programming

Power Supply Input: (LA-201 included) 120VAC, 60 Hz, 19 Watts (maximum continuous). UL Listed

Power Supply Output: 15VAC, 1A

Dimensions: 8.0 in x 8.0 in x 1.75 in WxDxH (20.3cm x 20.3cm x 4.45cm)

Unit Weight with LA-201 Power Supply: 4.2 lbs (1.9kg)

Shipping Weight: 6 lbs (2.7kg)

Rack Mounting: 1/2 rack unit (RU), optional rack mount not include

Temperature (Operation): -10C to 40C (14 F to 104 F)

** All system specifications are wireless end-to-end

LR-100 Accessories*

Other Stationary Unit Antennas



LA-122 Universal Antenna Kit

The single solution for all of your indoor remote antenna needs. Includes components for 72 and 216MHz, and multiple radial and mounting configurations.

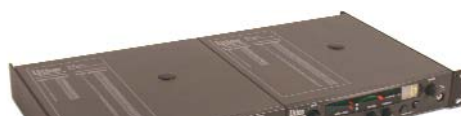


216MHz Ground Plane (Remote Mount)
LA-107 for 216MHz



Antenna Kit for the LA-326 Rack Mount Kit
LA-125 for 72MHz or LA-126 for 216MHz

LT-800 Rack Mount Options



LA-326 Rack Mounting Kit
Includes components for single and dual rack configuration and a security cover

Expansion Speaker



LA-316 Expansion Speaker

10 watt, 2 channel speaker



LA-327 "L" Bracket Mount Kit

Use to mount on any flat surface

* See www.ListenTech.com/LR-100.cfm for additional features, specifications, and accessories.

8535 South 700 West, Suite A, Sandy, Utah 84070-2515 U.S.A.
 Telephone: +1.801.233.8992 or Toll Free: 1.800.330.0891
 Fax: +1.801.233.8995
 Email: info@ListenTech.com
 Internet: www.ListenTech.com

Printed in U.S.A. 09/03. Listen and the Listen logo are trademarks of Listen Technologies Corporation, © Copyright 2003. Reprinted with permission only.

Look&Listen™ LCD Display is a powerful user interface that simplifies product set up and use.*

Indicates relative RF signal strength in five steps on Listen receivers.

Shows which of the 57 channels the unit is tuned to.

When operating on battery, indicates battery level in three stages and flashes when battery is low. Listen's proprietary SmartCharge™ technology allows you to conveniently leave rechargeable batteries in unit when recharging.

PGM indicates that you are in program mode on the LR-100, LR-500, LR-600, or LT-700.

LOCK icon indicates that the current channel is locked in so the receiver cannot be re-tuned inadvertently. Lock and unlock by pressing the SEEK button for 5 seconds (all models except the LT-700, for which you hold the DOWN button).

While in program mode the LR-100, LR-500, LR-600, or LT-700 the L/O icon indicates the channel selected has been locked out and will not be tuned or displayed to the user.

* Excluding the LR-300 Digital Receiver, which does not have a Look&Listen LCD display.

ADA Tax Breaks and Guidelines

Did you know that Listen products can be partially paid for – sometimes significantly – with a tax credit (up to \$5,000 for small businesses) when used to accommodate ADA guidelines. For complete ADA guidelines and IRS forms, visit www.ListenTech.com.

Regarding ADA and the benefits of Listen Products:

- The Americans with Disabilities Act (ADA) requires public facilities to provide assistive listening devices for hard of hearing people.
- Public facilities are required to provide enough listening devices for 4% of seating capacity.
- Listen's 72MHz and 216MHz assistive listening systems (ALS) meet ADA conformance guidelines.

- Listen's 216MHz systems can be used for multiple applications, adding value to your purchase! For example, in addition to assistance for the hard of hearing, the same system can be used for language interpretation and tour group communications.
- Listen products are 100% compatible with existing FM assistive listening systems—use Listen receivers to expand a system and, in many cases, improve its sound quality. (Upgrades and new systems both can qualify for tax breaks!)

Examples of facilities that must comply with ADA guidelines: restaurants, hotels, theaters, convention centers, stadiums, arenas, retail stores, shopping centers, hospitals, museums, libraries, parks, zoos, amusement parks, private schools, day care centers, health spas, and bowling alleys.

Up to 57 channels on Listen products!*

Most Listen transmitters and receivers* can access 57 wide and narrow band channels at 72MHz, or 57 at 216MHz.

72MHz Range:

216MHz Range:

Channel	Frequency	Channel	Frequency
1	72.025	1A	216.0125
2	72.075	2A	216.0250
A	72.100	3A	216.0375
3	72.125	1B	216.0625
4	72.175	2B	216.0750
K	72.200	3B	216.0875
5	72.225	1C	216.1125
6	72.275	2C	216.1250
B	72.300	3C	216.1375
7	72.325	1D	216.1625
8	72.375	2D	216.1750
N	72.400	3D	216.1875
9	72.425	1E	216.2125
10	72.475	2E	216.2250
C	72.500	3E	216.2375
11	72.525	1F	216.2625
12	72.575	2F	216.2750
O	72.600	3F	216.2875
13	72.625	1G	216.3125
14	72.675	2G	216.3250
D	72.700	3G	216.3375
15	72.725	1H	216.3625
16	72.775	2H	216.3750
P	72.800	3H	216.3875
17	72.825	1J	216.4125
18	72.875	2J	216.4250
E	72.900	3J	216.4375
19	72.925	1K	216.5125
20	72.975	2K	216.5250
33	74.625	3K	216.5375
34	74.675	1L	216.5625
I	74.700	2L	216.5750
35	74.725	3L	216.5875
36	74.775	1M	216.6125
37	75.225	2M	216.6250
38	75.275	3M	216.6375
J	75.300	1N	216.6625
39	75.325	2N	216.6750
40	75.375	3N	216.6875
R	75.400	1P	216.7125
21	75.425	2P	216.7250
22	75.475	3P	216.7375
F	75.500	1R	216.7625
23	75.525	2R	216.7750
24	75.575	3R	216.7875
S	75.600	1S	216.8125
25	75.625	2S	216.8250
26	75.675	3S	216.8375
G	75.700	1T	216.8625
27	75.725	2T	216.8750
28	75.775	3T	216.8875
T	75.800	1U	216.9125
29	75.825	2U	216.9250
30	75.875	3U	216.9375
H	75.900	1V	216.9625
31	75.925	2V	216.9750
32	75.975	3V	216.9875

Bold faced type denotes wide band channels, light faced type denotes narrow band channels.

* The LR-300 Digital Receiver operates on seventeen 72MHz wide band channels.